



# Elevated Work Platform Product Suite

OUR COMMITMENT TO MINING SAFETY AND PRODUCTIVITY RUNS DEEP.

CANADA | USA | MEXICO | PERU | SOUTH AFRICA | AUSTRALIA

[macleanengineering.com](http://macleanengineering.com)

 **MacLean**  
Performance. Reliability. Innovation.





# MacLean Elevated Work Platform Solutions.

## Elevate Your Reach Underground

The MacLean Elevated Work Platform product suite is designed to facilitate tasks such as maintenance, inspections, installations, and repairs at elevated or hard-to-reach locations. These platforms are crucial for enabling safe and efficient mine services maintenance and construction work in the underground environment.

These vehicles are offered in a range of models with different features and capabilities to suit the specific needs of mining companies. And all our Elevated Work Platforms are designed with a focus on safety and productivity, while also emphasizing on ruggedness, durability, and operator comfort to excel in the challenging conditions of underground mining environment.

The ML5 Multi-Lift is the latest addition to the Elevated Work Platform (EWP) product line. The equipment is fully equipped as standard for the multi-tasking required in today's underground trackless mining environment. It represents an enhanced version of the widely recognized integrated tool carrier (ITC) commonly used in the industry, featuring additional capabilities specifically optimized for underground EWP applications.

Next up are the MacLean SL2 and SL3 Scissor Lifts. With a proven track record of success spanning five decades, they have become essential components of many mining operations' support equipment fleet.

Last but definitely not least is the LR3 Boom Lift. The equipment is engineered and purpose-built to provide ultra-versatile, full-spectrum reach and heavy load capabilities in larger-heading mines. It is ideally suited to a wide range of mine services installation as well as construction and maintenance applications.





# ML5 Multi-Lift



## Features:

- Self-propelled, 4-wheel drive articulated carrier
- 5m (15 ft) deck height; 6.5m (21 ft) working height
- SWL (safe working load) of 2,260kg (5,000 lbs) with EWP
- +/- 30 degree boom swing
- Rear stabilizing jacks
- Emergency lowering system
- Interchangeable baskets/attachments

## Options:

- Available with battery electric or diesel powertrain options
- Canopy and enclosed cab option
- On-board hydraulic driven air compressor
- Electric-Hydraulic power pack

## Benefits:

- Purpose built, certified EWP for underground mining
- Range of interchangeable baskets/attachments for versatility
- Increased productivity with boom swing, in basket controls and remote drive system
- Dual-seat cab that enables seamless transition between operators, ensuring continuous operation and maximizing equipment utilization

## Applications:

- Fan installation
- Pipe installation
- Cable bolt installation, grouting and tensioning
- Electrical cable installation
- Material handling
- General construction and maintenance

# SL2 & SL3 SCISSOR LIFTS



## Features:

- 3,630 kg (8,000 lb) deck capacity and attachment system
- Raised deck height 3.66 m (144")
- Deck size 2.44 x 3.66 m (8' x 12'), with optional extension
- Proven heavy duty scissor lift mechanism
- Hydraulic deck shifting forward or sideways
- Heavy duty frame construction

## Benefits:

- Remote engine start/stop from deck
- Low cost, dependable mine supply vehicle
- Compatibility with Mine-Mate™ attachments
- Ease of maintenance

## Options:

- Available with battery electric or diesel powertrain options
- Canopy and enclosed cab option
- Remote creeper drive system
- Vehicle monitoring and telemetry system
- On-board hydraulic driven air compressor
- Emergency steering system

## Applications:

- Best suited for installation of ventilation ducting, electrical reticulation, and piping for air and water services
- Rehabilitation projects are conducted safely and efficiently from the level work deck, elevated to a comfortable work height



# LR3 Boom Lift



## Features:

- 6m (19.5ft) deck height; 8m (26.5ft) working height
- Lifting capacity of up to 4,500 kg (10,000 lbs)
- Deck extends down to ground level for work in 1-3m height range
- +/-15 degree boom swing
- Wireless remote control for boom and basket functions
- Emergency lowering system
- Compliant EWP

## Benefits:

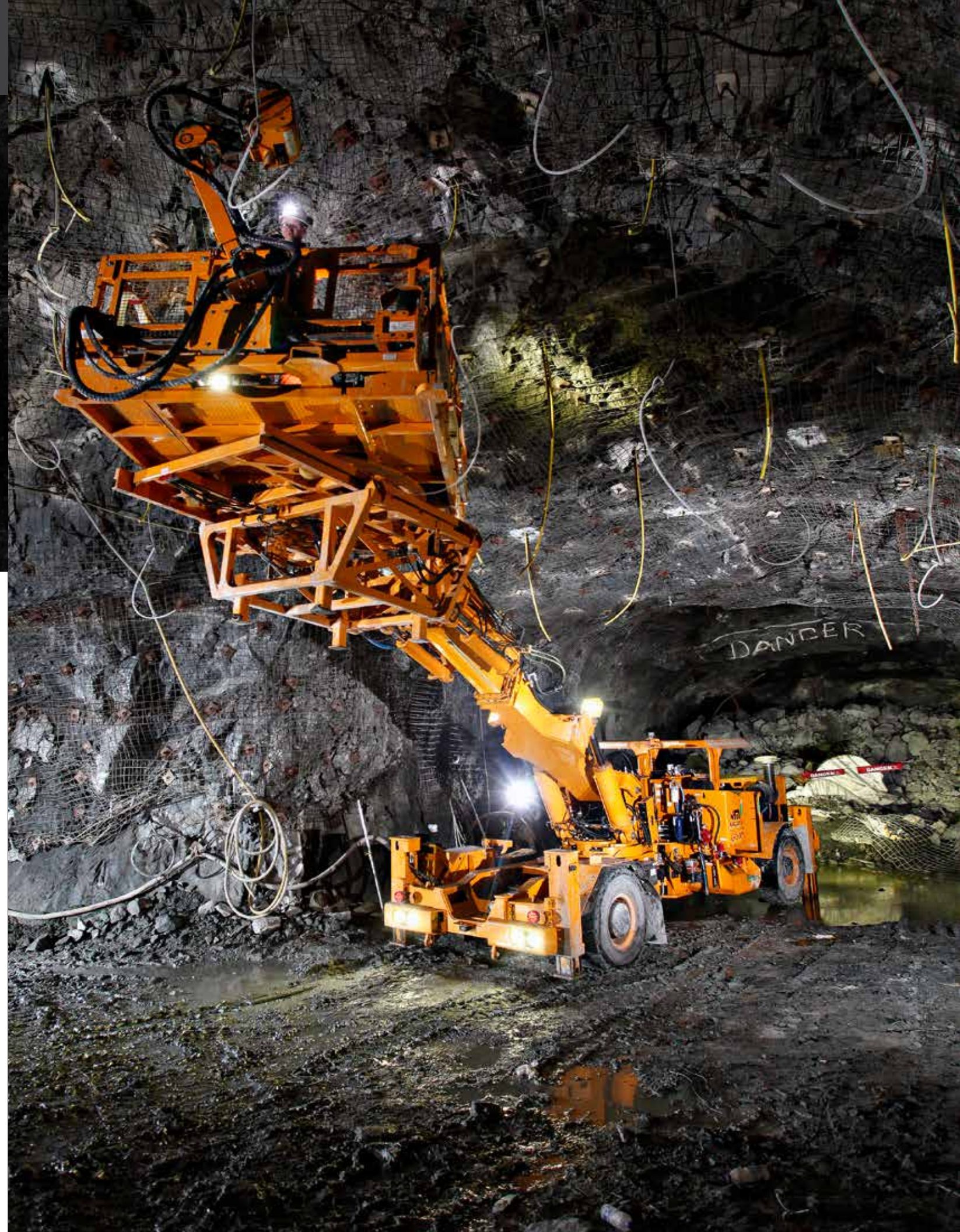
- Interchangeable baskets / decks
- Compatibility with Mine-Mate™ attachments
- 8m working height for high-reach applications, with wide range of motion that allows deck to descend to ground level for low-reach needs

## Options:

- Available with battery electric or diesel powertrain options
- Canopy and enclosed cab option
- Vehicle monitoring and telemetry system
- On-board hydraulic driven air compressor
- Engine end hydro-pneumatic suspension with adjustable ride control

## Applications:

- A wide-range of mine services installation in larger-heading mines
- Construction and maintenance applications





# SERVICE. SUPPORT.

The MacLean Way. 

## WHEN YOU BUY A MACLEAN MINING VEHICLE, YOU ARE FAMILY.

We care that our products and technologies enhance life above ground and below. Whether it's increased safety and productivity, or quieter, more ergonomic, zero emissions operations - our products make a real difference in the world. We back this up with a global branch infrastructure and technical support, field mechanics, and trainers. The result: increased machine productivity and operator safety and a lower Total Cost of Machine Ownership (TCO) for you.

To learn more, reach us at: [info@macleanengineering.com](mailto:info@macleanengineering.com)



OUR COMMITMENT TO MINING SAFETY AND PRODUCTIVITY RUNS DEEP.

CANADA | USA | MEXICO | PERU | SOUTH AFRICA | AUSTRALIA

[macleanengineering.com](http://macleanengineering.com)

 **MacLean**  
Performance. Reliability. Innovation.